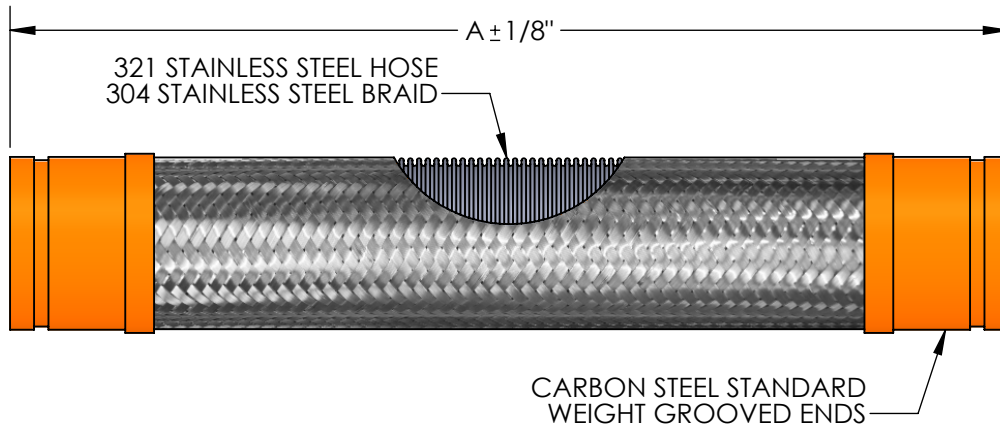


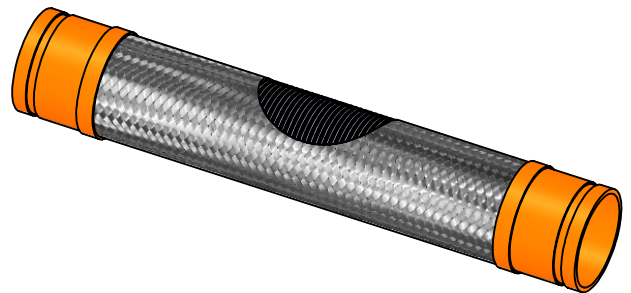
**MODEL GLPUL
GROOVED FLEXIBLE PUMP CONNECTOR**



QTY	PART NUMBER	PIPE SIZE	A	BRAID	PRESSURE RATING (PSI)*	INTERMITTENT LATERAL OFFSET
	GLPUL0100	1"	14"	SINGLE	300	3/4"
	GLPUL0125	1-1/4"	15"	SINGLE	300	3/4"
	GLPUL0150	1-1/2"	16"	SINGLE	300	3/4"
	GLPUL0200	2"	17"	SINGLE	300	3/4"
	GLPUL0250	2-1/2"	18"	SINGLE	300	3/4"
	GLPUL0300	3"	19"	DOUBLE	300	3/4"
	GLPUL0400	4"	20"	DOUBLE	175	3/4"
	GLPUL0500	5"	21"	DOUBLE	175	3/4"
	GLPUL0600	6"	22"	DOUBLE	175	3/4"
	GLPUL0800	8"	25"	DOUBLE	175	3/4"
	GLPUL1000	10"	26"	DOUBLE	175	3/4"
	GLPUL1200	12"	28"	DOUBLE	175	3/4"

SUITABLE FOR USE IN DRY PIPE SYSTEMS
TEMPERATURES TO -40°F.

MAX INTERMITTENT OFFSET FROM CENTERLINE 1/8"
MAX PERMANENT OFFSET FROM CENTERLINE 3/8"



NSF 372 - LEAD FREE

The wetted surface of this product contacted by consumable water contains less than one quarter of one percent (0.25%) of lead by weight. Material complies with state codes and standards, where applicable, requiring reduced lead content.

CUSTOMER: _____

PROJECT: _____

ENGINEER: _____

REV. 1	SMALLER SIZES ADDED	DATE 9/14/2021
		2323 W. HUBBARD ST. CHICAGO, IL 60612 TEL: 312-738-3800 FAX: 312-738-0415 WWW.METRAFLEX.COM
MODEL GLPUL UL LISTED GROOVED FLEXIBLE PUMP CONNECTOR FOR FIRE PROTECTION		
DRAWN BY: RDAHYA		DATE: 3/11/2019
APPROVED:		DATE:
SCALE: N/A	DRAWING NUMBER: GLPUL	