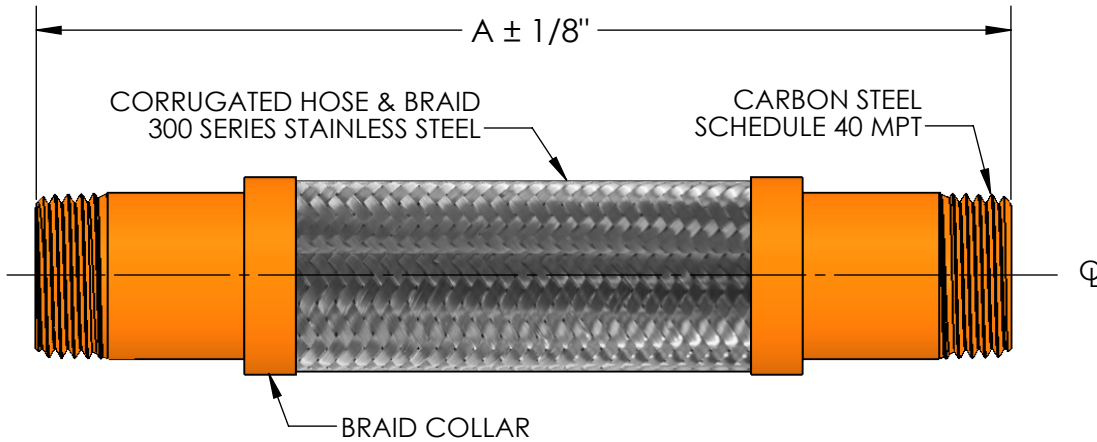


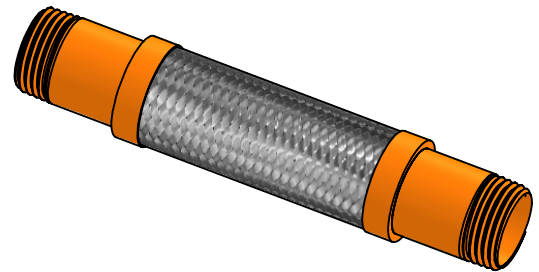
**MODEL FSUT8  
THREADED FLEXIBLE PUMP CONNECTOR**



CONTACT FOR ADDITIONAL SIZES AND MOVEMENTS.

QTY	PART NUMBER	PIPE SIZE		A	PRESSURE RATING (PSI)	WEIGHT (LBS)	INTERMITTENT LATERAL OFFSET
		INCH	MM				
	FSUT80050	1/2"	15	25-5/8"	300	2	±8"
	FSUT80075	3/4"	20	28-1/2"	300	2	±8"
	FSUT80100	1"	25	30-3/8"	300	3	±8"
	FSUT80125	1-1/4"	32	32-1/2"	300	5	±8"
	FSUT80150	1-1/2"	38	34-1/2"	300	6	±8"
	FSUT80200	2"	50	37-7/8"	300	7	±8"
	FSUT80250	2-1/2"	65	42-1/8"	300	9	±8"
	FSUT80300	3"	80	43-1/4"	300	14	±8"
	FSUT80400	4"	100	47-3/4"	175	20	±8"

SUITABLE FOR USE IN DRY PIPE SYSTEMS  
TEMPERATURES TO -40°F.



**NSF 372 - LEAD FREE**

The wetted surface of this product contacted by consumable water contains less than one quarter of one percent (0.25%) of lead by weight. Material complies with state codes and standards, where applicable, requiring reduced lead content.

CUSTOMER: \_\_\_\_\_

PROJECT: \_\_\_\_\_

ENGINEER: \_\_\_\_\_

REV.	DATE
2323 W. HUBBARD ST. CHICAGO, IL 60612 TEL: 312-738-3800 FAX: 312-738-0415 WWW.METRAFLEX.COM	
<b>MODEL FSUT</b> THREADED FLEXIBLE PUMP CONNECTOR	
DRAWN BY: <b>JIMA</b>	DATE: <b>10/6/2021</b>
APPROVED:	DATE:
SCALE: <b>N/A</b>	DRAWING NUMBER: <b>FSUT8</b>