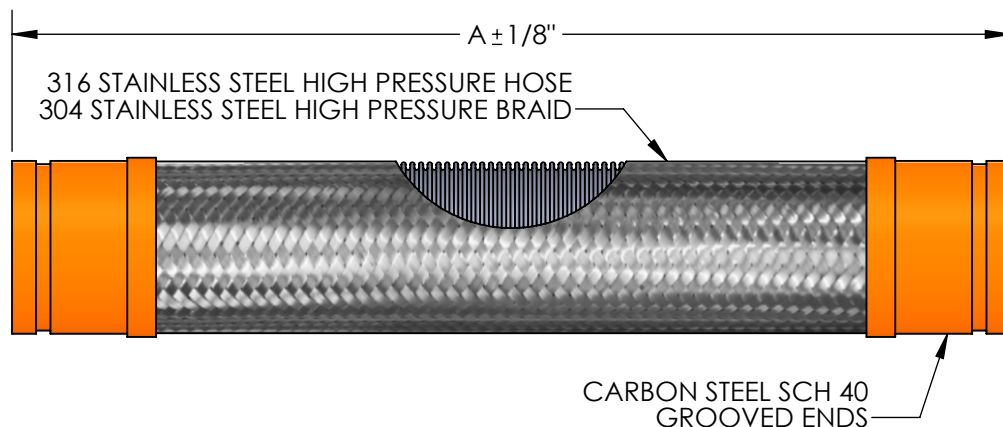


**MODEL FSUGHP4**  
**GROOVED FLEXIBLE PUMP CONNECTOR**  
**±4" MOVEMENT**

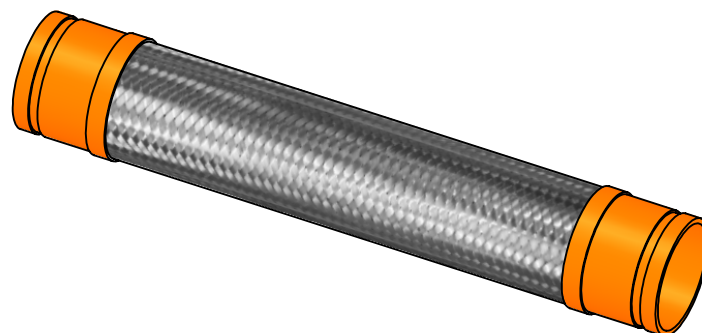


QTY	PART NUMBER	PIPE SIZE	A	BRAID	PRESSURE RATING (PSI)*	INTERMITTENT LATERAL OFFSET
	FSUGHP40400	4"	40-3/4"	DOUBLE	300	±4"
	FSUGHP40600	6"	44-1/4"	DOUBLE	300	±4"

SUITABLE FOR USE IN DRY PIPE SYSTEMS  
TEMPERATURES TO -40°F.

\*FOR SAFE WORKING PRESSURE ABOVE 70°F,  
MULTIPLY THE PRESSURE SHOWN AT 70°F  
TIMES THE CORRECTION FACTOR OF THE  
REQUIRED TEMPERATURE.

TEMPERATURE (°F)	FACTOR
70	1.0
200	.91
300	.85
400	.78
500	.77
600	.76



**NSF 372 - LEAD FREE**

The wetted surface of this product contacted  
by consumable water contains less than one  
quarter of one percent (0.25%) of lead by  
weight. Material complies with state codes  
and standards, where applicable, requiring  
reduced lead content.

CUSTOMER: \_\_\_\_\_

PROJECT: \_\_\_\_\_

ENGINEER: \_\_\_\_\_

REV. 1	REMOVED 5" MODEL	DATE 10/03/2025
2323 W. HUBBARD ST. CHICAGO, IL 60612 TEL: 312-738-3800 FAX: 312-738-0415 WWW.METRAFLEX.COM		
<b>MODEL FSUGHP4</b> UL LISTED GROOVED FLEXIBLE PUMP CONNECTOR FOR FIRE PROTECTION, ±4" MOVEMENT, HP H&B		
DRAWN BY: <b>DEVINR</b>	DATE: <b>01/03/2023</b>	
APPROVED:	DATE:	
SCALE: N/A	DRAWING NUMBER: <b>FSUGHP4</b>	