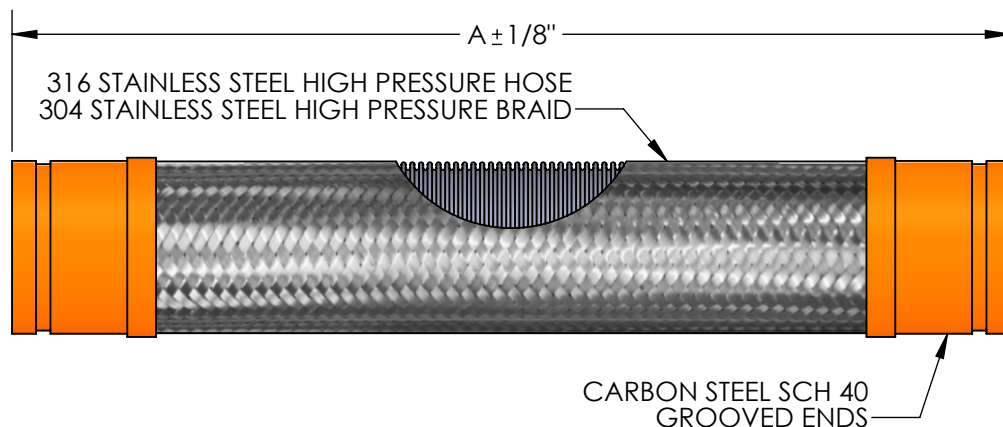


MODEL FSUGHP2
GROOVED HIGH PRESSURE FLEXIBLE PUMP CONNECTOR
±2" MOVEMENT

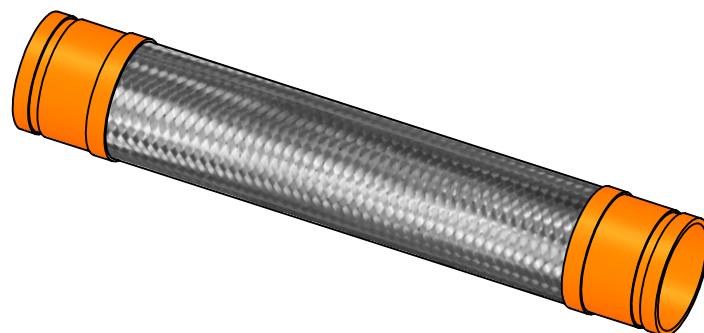


QTY	PART NUMBER	PIPE SIZE	A	BRAID	PRESSURE RATING (PSI)*	INTERMITTENT LATERAL OFFSET
	FSUGHP20400	4"	31-1/4"	DOUBLE	300	±2"
	FSUGHP20600	6"	33-3/4"	DOUBLE	300	±2"

SUITABLE FOR USE IN DRY PIPE SYSTEMS
TEMPERATURES TO -40°F.

*FOR SAFE WORKING PRESSURE ABOVE 70°F,
MULTIPLY THE PRESSURE SHOWN AT 70°F
TIMES THE CORRECTION FACTOR OF THE
REQUIRED TEMPERATURE.

TEMPERATURE (°F)	FACTOR
70	1.0
200	.91
300	.85
400	.78
500	.77
600	.76



NSF 372 - LEAD FREE

The wetted surface of this product contacted
by consumable water contains less than one
quarter of one percent (0.25%) of lead by
weight. Material complies with state codes
and standards, where applicable, requiring
reduced lead content.

CUSTOMER: _____

PROJECT: _____

ENGINEER: _____

REV. 1	REMOVED 5" MODEL	DATE 10/03/2025
2323 W. HUBBARD ST. CHICAGO, IL 60612 TEL: 312-738-3800 FAX: 312-738-0415 WWW.METRAFLEX.COM		
MODEL FSUGHP2 UL LISTED GROOVED FLEXIBLE CONNECTOR FOR FIRE PROTECTION, ±2" MOVEMENT, HP H&B		
DRAWN BY: DEVINR	DATE: 01/03/2023	
APPROVED:	DATE:	
SCALE: N/A	DRAWING NUMBER: FSUGHP2	