



## **Fireloop® Installation Instructions:**

1. Fireloop® can be connected to adjacent piping with rigid or flexible type couplings.
2. A Metraflex Fireloop® may be installed in any orientation / position.\*
3. Fireloop® support:
  - a. No support is required for the (180°) return bend for Fireloops® 2 inch or smaller.
  - b. Support for the (180°) return bend for Fireloops® 2½” and larger. Fireloops® hanging down require no support. Support for other orientations can be provided in two ways;
    - i. A hanger rod at the 180 that is 12” long or *greater*, for the +/- 4” of movement Fireloops® will allow the loop to swing and no additional steps are necessary. For +/- 8” of movement Fireloops® the hanger rod should be 16” long or *greater*.
    - ii. If the Fireloop® is installed with hanger rods less than distances recommended above, a Seismic Breakaway Hanger (SBH) is recommended, to allow the Fireloop® to flex during seismic event.
4. Fireloops® are shipped with the shipping bar to insure a neutral face to face during installation. This shipping bar must remain in place during installation, but then must be removed prior to testing.
5. Clearance: Fireloops® designed for:
  - a. +/- 4” of movement, must have 4” of clearance all around the Fireloop®
  - b. +/- 8” of movement, must have 8” of clearance all around the Fireloop®
  - c. +/-16” of movement, must have 16” of clearance all around the Fireloop®
  - d. +/- 24” of movement, must have 24” of clearance all around the Fireloop®

Ph: 312-738-3800

[www.Metrafire.com](http://www.Metrafire.com)

The Metraflex Company, 2323 W. Hubbard, Chicago, IL 60612 • Fax 312-738-0415

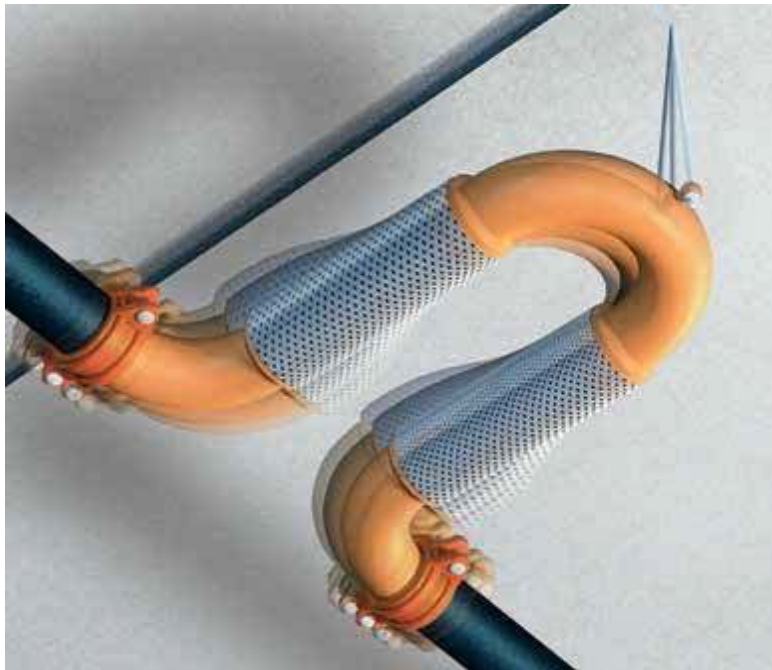
©2019 The Metraflex Company1

# Metraflex<sup>®</sup>

*for pipes in motion*

6. If the Fireloop cannot span the building's seismic separation, it may be installed with the closest elbow not more than 24 inches from the seismic separation.

\* When Fireloop is installed in the up (180° bend above pipe run) position consideration should be given to the removal of entrapped air.



Ph: 312-738-3800

[www.Metrafire.com](http://www.Metrafire.com)

The Metraflex Company, 2323 W. Hubbard, Chicago, IL 60612 • Fax 312-738-0415

©2019 The Metraflex Company2