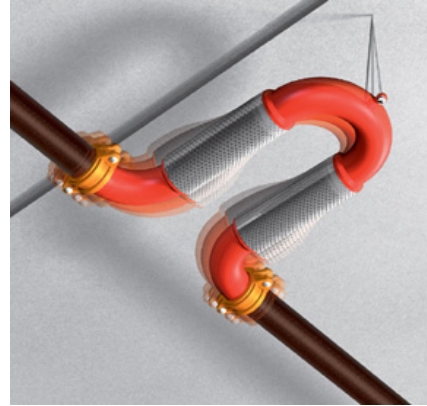


## Fireloop<sup>®</sup> Installation Instructions:

1. Fireloop<sup>®</sup> can be connected to adjacent piping with rigid or flexible type couplings.
2. A Metraflex Fireloop<sup>®</sup> may be installed in any orientation / position.\*
3. Fireloop<sup>®</sup> support:
  - a) No support is required for the (180°) return bend for Fireloops<sup>®</sup> 2 inch or smaller.
  - b) Support for the (180°) return bend for Fireloops<sup>®</sup> 2" and larger. Metraloops hanging down require no support. Support for other orientations can be provided in two ways;
    - i. A hanger rod at the 180 that is 12" long or greater, for the +/- 4" of movement Metraloops will allow the loop to swing and no additional steps are necessary. For +/- 8" of movement Metraloops the hanger rod should be 16" long or greater.
    - ii. If the Fireloop<sup>®</sup> is installed with hanger rods less than distances recommended above, a spring hanger assembly is recommended, to allow the Fireloop<sup>®</sup> to flex during seismic event.
4. Fireloops<sup>®</sup> are shipped with the shipping bar to insure a neutral face to face during installation. This shipping bar must remain in place during installation, but then must be removed prior to testing.
5. Clearance; Fireloops<sup>®</sup> designed for;
  - a) +/- 4" of movement, must have 4" of clearance all around the Fireloop<sup>®</sup>
  - b) +/- 8" of movement, must have 8" of clearance all around the Fireloop<sup>®</sup>
6. If the Fireloop cannot span the building's seismic separation, it may be installed with the closest elbow not more than 24 inches from the seismic separation.



\* When Fireloop is installed in the up (180 bend above pipe run) position consideration should be given to the removal of entrapped air.